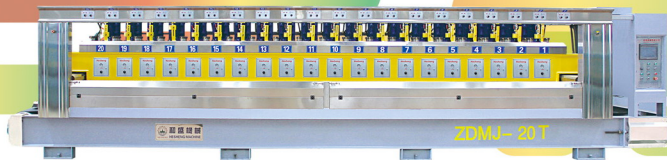




HESHENG
MACHINE

{ ZDMJ-8/12/16/20/24T

Automatic polishing machine for granite slab





brief Introduction

we are not simply direct stone machine manufacturer, while aiming at totally customer satisfaction.

- **History:** Since 1983 .
- **Staff:** Owning more than 200 well educated and experienced technician & engineer ,including advanced R&D department . professional team of after sale service,making itself a leading stone machine manufacturer.
- **Workshop:** Foundry Plant. Workpiece Processing & Assembling Factory .
- **Honor and Certification:** ISO9001:2000 . Provincial "High-Tech Enterprise" "Outstanding Enterprise of Technical Renovation" ...
- **Products:** Automatic Bridge Saw. High Efficiency Multidisc Block Cutter. Gantry Block Cutter. Manual Edge Cutting Machine. Special Shape Processing Machine for Countertop ,Column,... Collection of Polishing Machine and other customize equipment for processing slab and block material .
- **Market:** We have exported our machines to Russia. Australia. Vietnam. America. Canada. Mexico. Spain. Bulgaria. Greece and many other countries and districts.
- **Customize:** We can also customize the machinery according to the your requirement. For more details on pricing and other requirements,Pls contact us.
- **Quanzhou Mingsheng Machinery Factory** is a new Subsidiary of Jinjiang Hesheng machine co.,Ltd. At present, it covers a productive land of 110 acres at Hailian Pioneer Park in Shuitou Town and is oriented with producing Large-pattern Stone Material Machining Equipment

> Hesheng Machine

ZDMJ-8/12/16/20/24T
Automatic polishing machine for granite slab



side view 1



side view 2



night illumination



finished machinery packing



T12 T16 rear view



T20 T24 rear view



Polishing head

The polishing head with new structure could adjust rubber elasticity of each polishing head according to the different grinding materials, so the fineness and flatness of tile produced under the same conditions will be increased over 10%. The design of the polishing head could also avoid damaging the polished materials to maximum limit.



main motor

Main motor is made according to the old standard for powerful drive. Aluminum casing could lower total weight of crossbeam, and be featured as light and quick during swing which is helpful to increase yield



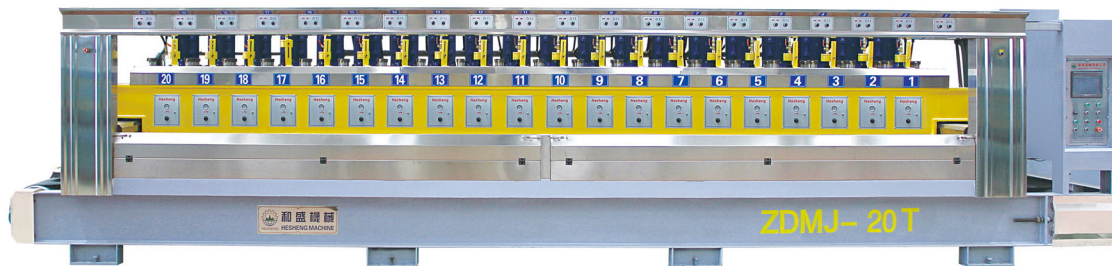
pneumatic valve

Pneumatic components (including cylinder, air valve and regulating switch) adopt Taiwan "AirTAC" products with stable quality and lower fault rate



linear guide

The linear guide (imported from Taiwan) is adopted as for side beam traveling, so the crossbeam is stable without vibration and jacking-up during traveling.



ZDMJ-8/12/16/20/24T < Automatic polishing machine for granite slab

- 1: The control system of combination with the domestic market demands, this machine adopts the design scheme of the foreign party and automatic system, which is featured as reliable performance, high yield and lower maintenance.
- 2: The machine is made by standard castings and steel, branded electrical equipment made in German, Japan and Taiwan, as well as branded bearing, motor and gear reducer.
- 3: The control system of this machine adopts PLC terminal control with LCD touch screen terminal as HMI for parameter setting and fault prompts during operation, etc. It is applicable to continuous grinding and polishing granite tile. Operating speeds of plate conveying and crossbeam of polishing disc are controlled by frequency converter; working pressure and the polishing width of tile are adjustable within the setting values. This machine can also automatically identify the shape of tile, so that each polishing disc (polishing head) could automatically lift and lower according to the identified shape of tile, and conduct tracking records for tile polishing at the same time. The overall machine is produced according to the standard requirements with performance up to the leading domestic level.

Product material:

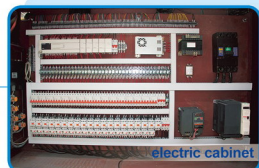
Name	Unit	ZDMJ-8T	ZDMJ-12T	ZDMJ-16T	ZDMJ-20T	ZDMJ-24T
The number of grinding		8	12	16	20	24
Thickness of the effective work	mm	15-50	15-50	15-50	15-50	15-50
Effective working width	mm	600-1050 (Asst Width1250)	600-1050 (Asst Width1250)	600-1050 (Asst Width1250)	600-1050 (Asst Width1250)	600-1050 (Asst Width1250)
Belt feed rate	m/min	0.8-3.5	0.8-3.5	0.8-3.5	0.8-3.5	0.8-4.0
Grinding motor power	kW	7.5	7.5	7.5	7.5	7.5
Total power	Kw	95	95	125	155	190
Water consumption	m ³ /h	8	12	16	20	25
Dimensions	m	5.0x1.9x2.2	6.4x1.9x2.2	7.8x1.9x2.2	9.3x1.9x2.2	10.8x1.9x2.2

Due to the renovation, all appearance and specification of this print shall be subjected to the final machine products.



primer

Primer adopts epoxy aluminum primer for good antirust performance and long service life.



electric cabinet

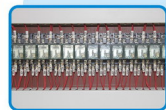
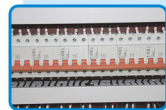
Computer (micro-processor) is selected the imported Mitsubishi products from Japan with the best stability and lowest failure rate among the same products. The frequency converter adopts product made by Schneider Electric which is a manufacturer specialized in frequency converter recognized all over world. Relay is from Siemens and intermediate relay from LG appliance.



PLC

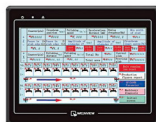


frequency converter





display screen



home screen



mechanical fault diagnosis



setting screen for polishing head



production statistics screen

>The touch screen adopts Taiwan WEINVIEW electrical equipment and button adopts products from Siemens (Jiangsu)



Hesheng Machine



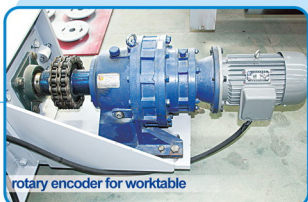
worktable reducer

Gear reducer is connected with idler wheel by chain so as to reduce possibility of shaft broken



inductor for slab feeding

Inductor for tile feeding could regulate according to the different thickness of tile



rotary encoder for worktable

The seat of rotary encoder of worktable adopts all-sealed structure for dustproof and waterproof, which could lower failure rate



rotary encoder for crossbeam

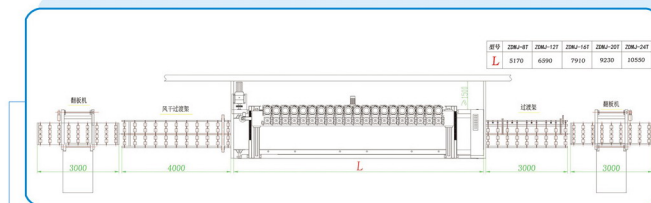
The rotary encoder for side beam traveling adopts synchronous belt drive with features of stable signal and convenient maintenance, etc.



roller conveyor



loading/unloading table



external dimension



FUJIAN JINJIANG HESHENG MACHINE CO.,LTD

ADD: NO.6 Wushan Industrial Zone, Anhai, Jinjiang City, Fujian Province, China

NEW PRODUCTION BASE: FUJIAN QUANZHOU MINGSHENG MACHINE CO.,LTD

ADD: Hailian Pioneer Park, Shuitou, Nanan City, Fujian Province, China

TEL: (0086)0595-85787366 85707366 FAX: (0086)0595-85799366

SERVICE HOTLINE: 4000-114-366

Http://www.chinahesheng.com www.stonemachinery.net

E-mail: hesheng@chinahesheng.com info@chinahesheng.com