



和盛機械
HESHENG MACHINE

DZQ-1600
液壓鎖緊柱式切石機
Multi-Blade Hydraulic
Stone Cutter

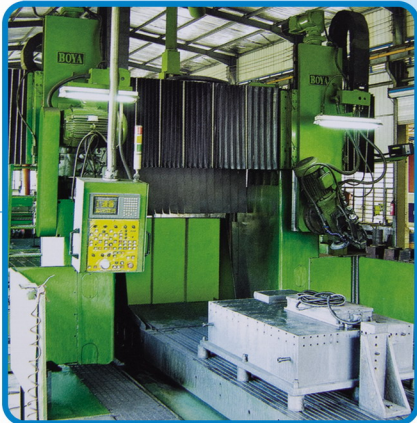




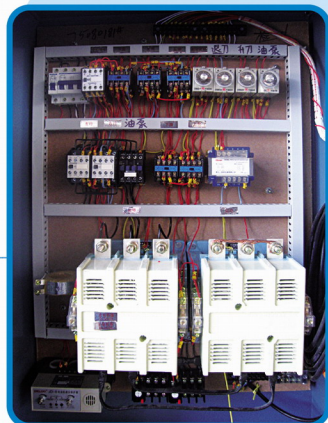
1. 采用全新磨床批量加工导柱，加工精度高，质量有保证。
Use CNC boring lathe to process the hole of sliding way column and headstock, to ensure the concentric and stability.



2. 采用数控磨床加工柱孔、主轴箱等，有效保证同心度的加工精度，提高产品稳定性。
Sliding ways of up/down system are quantity proceed by completely new grinding machine, for the purse of high precision and quality.



3. 机器主要部件采用数控加工机床加工，确保元件加工精度。
Processing precision of machine parts and components are ensured, due to the adoption of CNC drilling machine.



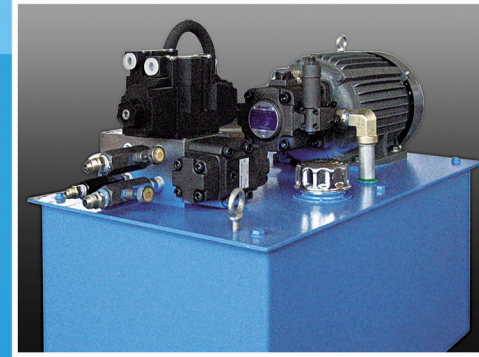
4. 台车左右行程采用感应式磁铁结构，有维修率低等优点。主要部件采用进口元件，如西门子继电器等。
Electronic Control Box: Using of Induction-Touch-Iron for trolley tour will greatly low down maintenancing rate. The main components are imported and adopted, such as Siemens Relay.



5. 水罩采用尼龙防水帆布材质，轻盈方便，便于更换锯片。
Blade Cover is made by Nylon Paulin, which is convenience for replacing blades.



6. 液压、电器元件均采用国内外优质配件。
All hydraulic & Electric Components used are the optimized quality from domestic and abroad.



7. 油箱总成—油泵；电磁阀等均采用台湾进口原件。
Oil Tank Assembly: including Oil Pump, Electromagnetic Valve and other components adopted are imported from Taiwan.



8. 工作台四周采用国标双层槽钢加固。
Worktable is reinforced by Standard Two-Double Channel Steel.



9. 水罩采用3mm厚钢板制作，内部采用沥青做防锈处理。
Blade Cover is made up of 3mm steel-plate, painted with asphaltum for anti-rust.



10. 导柱升降采用润滑脂（俗称黄油）来润滑，至多每三个月只须添加一次。大大减少维护次数。
Up/Down Column movements are lubricated by grease (Butter) which only need to be added up to only once every three months. It will significantly reduce maintenance frequency.



11. 采用全新复合材料“纳米尼龙”布料，有防水、防尘、抗拉力防磨损等特点，使用可拆式拉链结构有利于方便更换。
A new composite materials called "nano-nylon" cloth which with the characteristics of waterproof, dustproof, anti-rally of anti-wear, was used; and the use of detachable zipper will enable a easy replacement of it.



升降导柱采用四根表面经精度镀铬处理的圆钢，有间隙小，整体刚性好，切割时晃动小，使用寿命长等优点。
Up/Down sliding ways are made up of chrome-plated round steel to minimize cutting clearance and trembling, and to endure the using life of machine.

**>>> 高效
节能新机型**



DZQ-1600 液压锁紧柱式切石机 Multi-Blade Hydraulic Stone Cutter

本机是在组合锯的基础上，通过优化改良而成，机台上采用四立柱式液压锁紧结构，整体刚性好，间隙小，有效降低切割过程产生的晃动，所生产的板材精度高，平整度好。同时在提高刀头的使用寿命和降低耗电量都有显著成效。

立柱采用独特组合式双密封装置，大大降低粉尘对机械液压元件的磨损，有效延长机器的使用年限。独创润滑系统，有效减少机器保养次数，降低元件磨损的可能性。是一款综合效益都有明显提高的石材切割机。

The DZQ-1600 Hydraulic Stone Cutter is a multi-blade block saw for sawing kinds of stone blocks into slabs of varying thickness with up to 22 pc of diamond saw blades at the mostly..

The structure of such machine featured of simple and functional, is made up of a sturdy welded stabilized cast iron & steel to ensure maximum stability and utmost precision during sawing.

The up/down system is setup of Four hydraulic pressurize column, to ensure maximum protection against rust. Patented Lubrication System can vastly reduce maintenance frequency and maintenance costs which means a perfectly block cutter compared with traditional same kind of machine.

若因产品的更新，所有的外观及技术指标以产品实物为主。

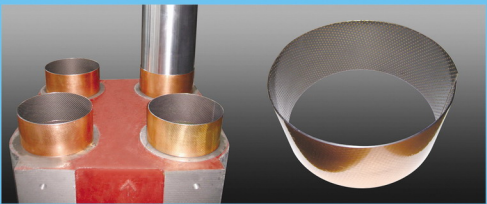
Due to the renovation, all appearance and specification of this print shall subjected to the final machine products.

| 型号 | Model | D8 | D12 | D14 | D16 | D18 | D20 | D22 | |
|--------|---------------------|--------------------|-------------|-------------|-------------|-------------|-------------|-------------|-------------------|
| 锯片直径 | Blade Diameter | Ø1600(Ø2200) | | | | | | | mm |
| 锯片数量 | Number of Blades | 8 (Ø1650x4+Ø260x4) | 12 | 14 | 16 | 18 | 20 | 22 | P |
| 升降行程 | Lifting travel | 1000(1300) | | | | | | | mm |
| 最大加工尺寸 | Max. cutting size | 3.5x1.1x0.9 | 3.5x1.2x0.9 | 3.5x1.3x0.9 | 3.5x1.3x0.9 | 3.5x1.3x0.9 | 3.5x1.5x0.9 | 3.5x1.6x0.9 | m |
| 主电机功率 | Power of main motor | 45 | 55 | 65 | 75 | 90 | 110 | 110(132) | kw |
| 耗水量 | Water consumption | 16 | 20 | 26 | 30 | 34 | 38 | 40(44) | m ³ /h |
| 重量 | Gross weight | ≈7.5 | ≈8.0 | ≈8.5 | ≈8.7 | ≈9 | ≈9.3 | ≈11.5 | T |

注：D14/D22机型可特殊定制切宽1650/1850mm的石头，台车加大加宽。机身升降行程亦可特殊定制加长行程。
Remark: Customized cutting width of stone is available for Model No. D14 and D22 (e.g. 1650/1850mm J/Up & Down Stroke can be lengthened (higher) if there is necessary.

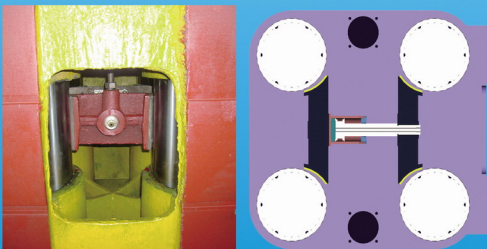
如需了解更多详细资料，请浏览本公司网站。
For more information, pls. login to www.chinahesheng.com

>>> 专利产品



升降导柱与中座接触面采用表面轧制美国杜邦“聚四氟乙烯”聚合物材料的导套；导套表面轧制成圆形储油坑，在少油或间隙断油条件下能正常工作，具有摩擦系数低，耐磨性能好，使用寿命长等优点。

A guiding polymer materials (Teflon, Brand Dupont) was used on the contact surface between up/down column and seat. Such guiding material is rolling into a circular storage pits, in less oil or oil under the conditions of space off to work with a low coefficient of friction, wear resistance and long service life, etc..

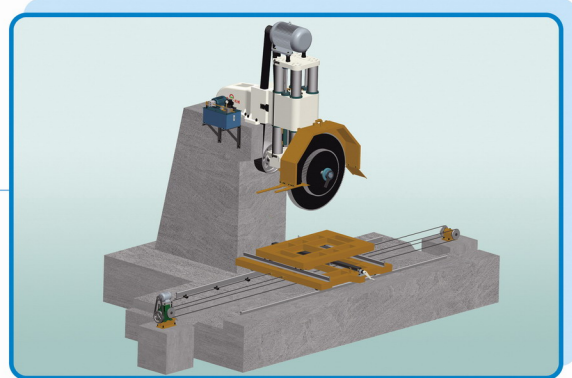


采用独创液压锁紧装置，在机械有磨损或切割过程中可减小机身间隙，有利于提高板材的平整度和延长刀头使用寿命。（*选配 Alternative）
Patented Locking Device is used to reduce the spacing of parts of machine from friction, this will maximum increase the cutting precision.



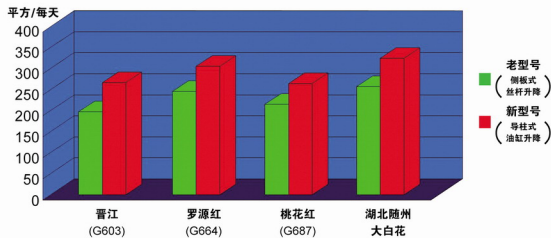
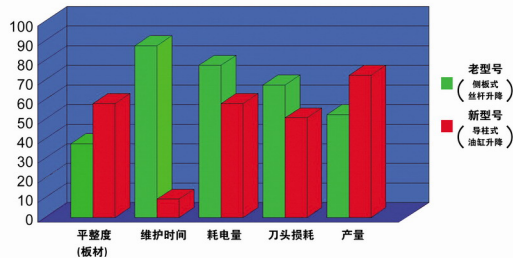
升降油缸采用德国进口油封（紫色覆板），由一个弹性密封环，两个挡环和两个导向环组成的五件套的活塞密封件。比常用密封件提高几倍使用寿命。

Up/Down oil cylinder using the combined oil seal, imported from German, imported German, composited with a flexible seal ring, two retaining rings and two block-oriented ring which is a five-pieces set of piston seals and with much several times of service life compared with other common sealing.



外形尺寸（长X宽X高）：D8:8500X4600X5800 D16:8500X5400X6300
Overall dimension (L * W * H) D12:8500X4800X5900 D18:8500X5400X6300
D14:8500X5200X6200 D22:8500X5500X6400

新老机型对照表



福建省晋江市和盛机械有限公司

FUJIAN JINJIANG HESHENG MACHINE CO.,LTD

ADD: 福建省晋江市安海镇梧山工业路6号

新厂址: 福建省泉州市铭盛机械有限公司

ADD: 福建省南安市水头镇海联创业园

TEL: (0086)0595-85787366 85707366 FAX: (0086)0595-85799366

全国统一客服热线: 4000-114-366

Http://www.chinahesheng.com www.stonemachinery.net

E-mail: hesheng@chinahesheng.com info@chinahesheng.com

